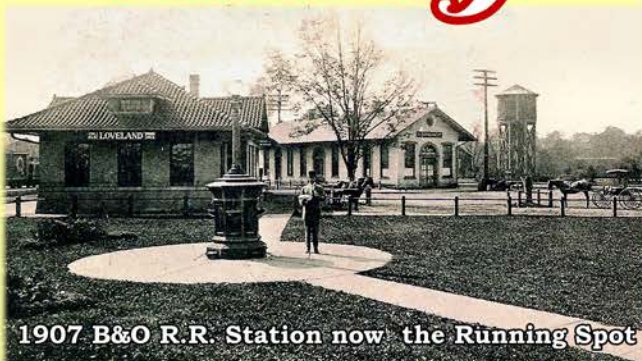


Downtown Loveland History



1907 B&O R.R. Station now the Running Spot

Present day Loveland originally lay at the edges of the Symmes Purchase and Virginia Military District, in what was then the Northwest Territory. The area was first settled in 1795 by Col. Thomas Paxton. It became a village in May of 1876, and later a city in 1961. Loveland's location at the junction of the Little Miami Railroad (now Loveland Bike Trail) and the Marietta and Cincinnati Railroad (now I&O) fueled the city's growth, bringing 40 passenger trains per day, and 12 scheduled freight trains between Loveland and Cincinnati. Originally called Paxton it was renamed Loveland After many years of the Railroad saying "Leave the mail at Loveland's store" A man named James Loveland operated a general store and post office near the railroad tracks.

John Hill Construction, LLC
Specializing in all phases of residential construction

Custom Homes / Additions
Experience • Quality • Trust

Remodeling
Bathrooms, Kitchens & Basements



Visit us at www.JohnHillConstruction.com

Downtown Loveland Events

Free Running Spot 5K.
Wednesdays Memorial Day to Labor Day.

Fountain Green Concert Series.
Third Wednesdays May through August.

- June 20th: Amazing Charity Race
- July 4th: Firecracker Festival
- September 13: Loveland Art Show
- September 19: Loveland Frogman Race
- October 3rd: Kidsfest. October 24: Monster Crawl
- November 28th: Small Business Saturday
- November 30th: 12 Days of Christmas Kick Off
- December 12th: Christmas in Loveland


*Loveland
Sweets*

Homemade Ice Cream & Candy
124 West Loveland Ave. • Loveland, OH 45140
lovelandsweets@fuse.net
513.583.8305

 **Comey & Shepherd**
REALTORS

 PROUD SPONSORS OF
LOVELAND'S
2015 AMAZING RACE

GINA DUBELL-SMITH'S
Historic Loveland Office Team

683-8181 | ROCKET@COMEY.COM | 477-1219 |  DESIGNED2SELL



JACKSON STREET MARKET



Historic downtown Loveland

*Parking
Walking Map
Shops • Businesses
Points of Interest*

Walkable Downtown Loveland

Loveland Dairy Whip
Quality Soft Serve Ice Cream

Four tenths of a mile West of the Bike Trail

Spring Hours
2 pm - 9 pm
Summer Hours
2 - pm -10 pm

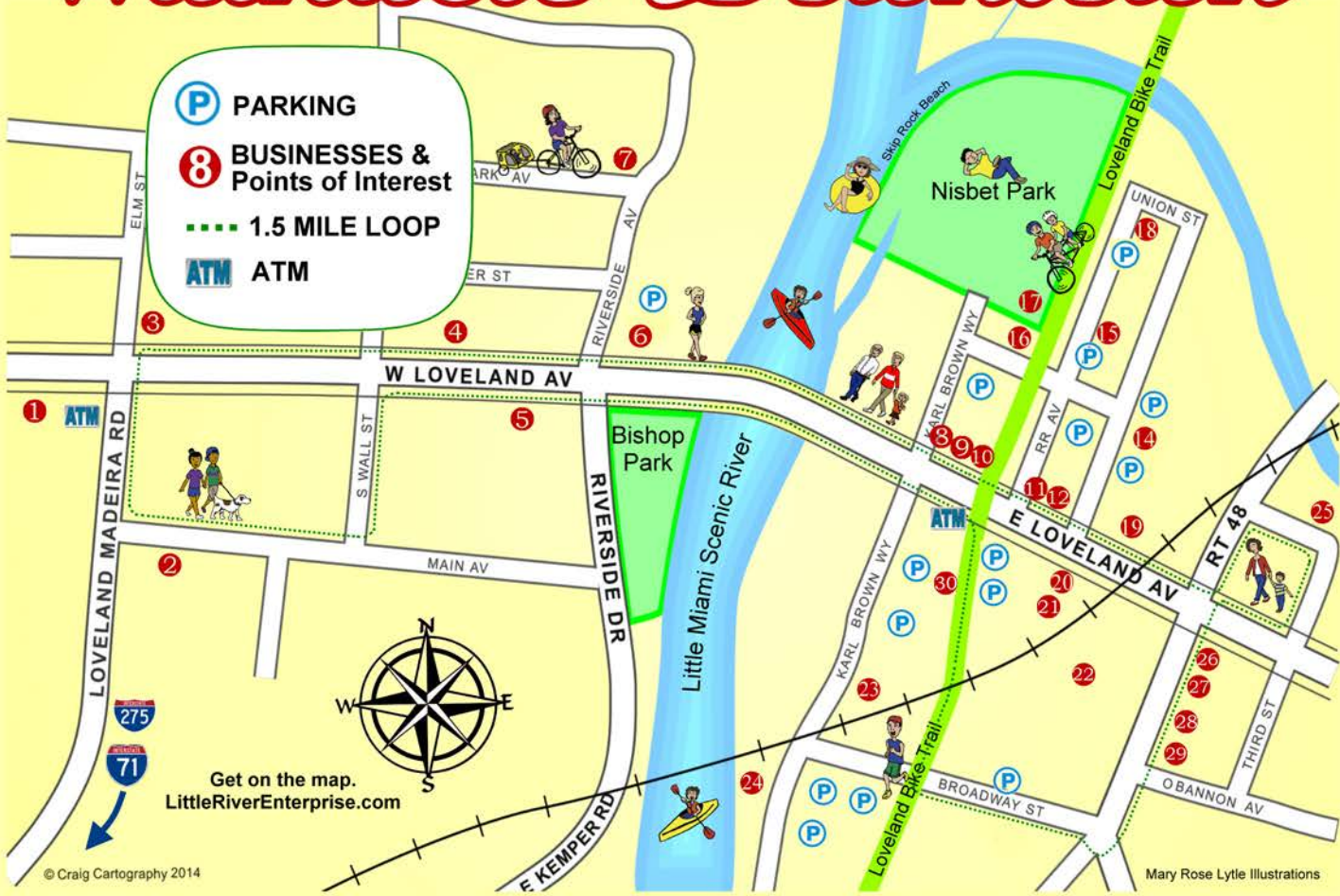
611 W Loveland Ave
513-683-0992

Serving Loveland Since 1955!



Tano
Bistro & Catering

204 West Loveland Avenue, Loveland, Ohio 45140 | 513.683.TANO (8266)
info@foodbytano.com | catering@foodbytano.com
www.foodbytano.com

- 1. LOVELAND DAIRY WHIP**
Quality Soft Serve Ice Cream Since 1955
- 2. LOVELAND ARTIST STUDIOS ON MAIN**
Come enjoy the art of over 40 artists.
- 3. BUSH RE SHEA INSURANCE AGENCY**
Auto Home Business Life Health 683-0777
- 4. DEIRDRE DYSON, FINE ARTIST STUDIO**
Viewings by appointment, 513-683-0349
- 5. EAGLE CUSTOM HOMES AND REMODELING**
Call for a free remodel consultation 582-2151
- 6. VETERANS' MEMORIAL**
- 7. HISTORY MUSEUM**
- 8. COMEY & SHEPHERD REALTORS*GINADUBELLSMITH**
Interactive home search thru our office window!
- 9. TANO BISTRO & CATERING**
Lunch & Dinner daily. Brunch on Weekends. 513-683-8266

- 10. JULIAN'S**
Casual Dining, Live Music, Full Bar, Great Patio.
- 11. PAXTON'S GRILL**
Great food in Historic Loveland on the Trail
- 12. LOVELAND SWEETS**
Espresso, homemade candy & ice cream 583-8305
- 14. THE WORK'S BRICK OVEN PIZZA**
Voted Cincinnati's Best 697-8408
- 15. LOVELAND BIKE RENTAL**
Across from Nisbet Park - 513-683-0468
- 16. FIREFIGHTERS MEMORIAL**
- 17. LITTLE MIAMI RIVER & TRAIL CENTER**
- 18. TRAILSIDE SHAVE ICE**
Coolest Spot on the Trail - 513-683-1000
- 19. CITY HALL**
- 20. THE FOUNTAIN GREEN**

- 21. THE RUNNING SPOT**
Passionate, knowledgeable, experienced staff.
- 22. LOVELAND STATION APARTMENTS**
Luxury Apartment Homes 513-910-3020
- 23. CINDY'S FRIENDLY TAVERN**
Open everyday 11:00 - 2:30 a.m. 583-5469
- 24. LOVELAND CANOE & KAYAK**
Paddlesports Rentals & Sales 513-683-4611
- 25. WHISTLE STOP CLAYWORKS**
Classes, Camps, Events 513-683-2529
- 26. FIREHOUSE**
- 27. LOVELAND STAGE CO. THEATER**
- 28. LOVELAND AREA CHAMBER OF COMMERCE**
- 29. JOHNHILLCONSTRUCTION.COM**
Basements, Baths, Kitchens and New Homes!
- 30. JACKSON STREET MARKET**
jacksonstreetmarketlovelandoh.com

© Craig Cartography 2014

Mary Rose Lytle Illustrations